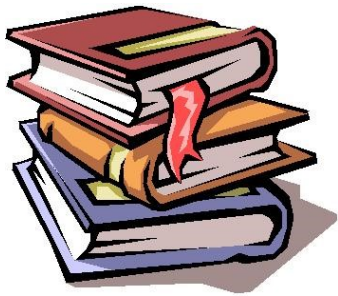




MELVILLE HIGH SCHOOL  
ENGLISH FACULTY

## English Standard



This course provides students with the opportunity to explore and experiment with the ways events, experiences, ideas and processes are represented in and through a range of texts. Students strengthen their knowledge and understanding of language and literature by responding to and composing a wide variety of texts for different audiences and purposes.

### Careers in English

Occupations where a study of English applies are endless, but could include: -

- |                  |                  |
|------------------|------------------|
| Law Clerk        | Journalist       |
| Public servant   | Writer           |
| Educational Aide | Librarian        |
| Anthropologist   | Teacher          |
| Media presenter  | Public relations |
| Editor           | Lawyer           |
| Sociologist      | Archivist        |



[www.melville-h.schools.nsw.edu.au](http://www.melville-h.schools.nsw.edu.au)

**MELVILLE HIGH SCHOOL**

44-50 NICHOLSON STREET, KEMPSEY, NSW 2440  
PH (02) 6562 7511

### Why study English Standard?

English provides students with the skills to engage with the world around them.

Students will develop an understanding of a range of text types including digital texts, poems, novels, film, speeches and plays.

It is expected that students studying English will apply their inquiry and analytical skills to delve into texts.

English Standard is by no means a less demanding course. Instead it focuses on a different set of skills within English. Students develop the ability to delve into texts and draw meaning from within them. As well as using these ideas to inform their understanding of key concepts.



## Year 11 Course Topics

- Common Module  
**Reading to Write**
- Module A  
**Contemporary Possibilities**
- Module B  
**Close Study of Literature**



## Year 12 Course Topics

- Common Module  
**Texts and Human Experiences**
- Module A  
**Language, Identity and Culture**
- Module B  
**Close study of Literature**
- Module C  
**The Craft of Writing (This may be studied in conjunction with either Module A or B)**

## Text Requirements

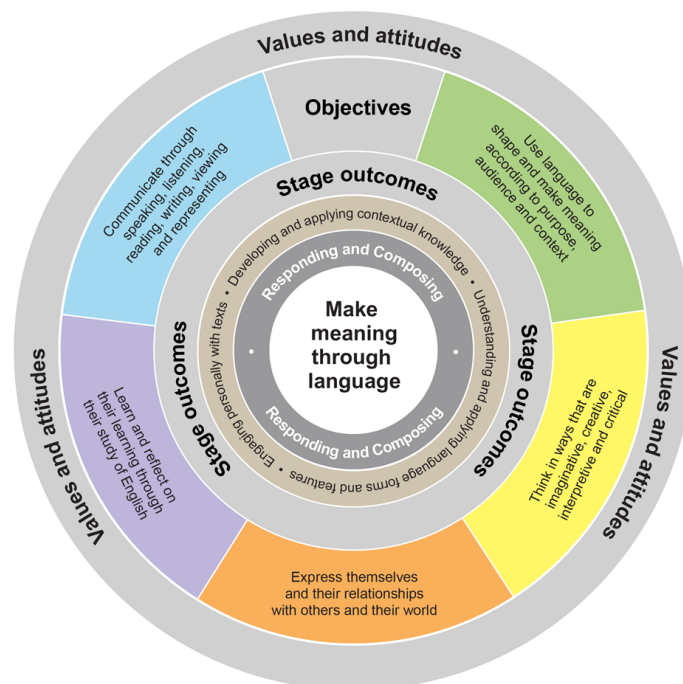
Students are required to closely study **three types of prescribed texts**, one drawn from each of the following categories:

prose fiction

poetry **OR** drama

film **OR** media **OR** nonfiction

The selection of texts for *Module C: The Craft of Writing* does not contribute to the required pattern of prescribed texts for the course.



## English Faculty

English is a mandatory course for all students in Year 11/ 12. Students are encouraged to choose an English course based on their ability level.

If you are unsure please discuss your options with either your teacher or the Head teacher English.

### Staff

Ms Korrin Chennell (Head Teacher)  
Mrs Michelle Brennan (Head Teacher Admin)  
Mrs Carli Baker  
Mr Nick Domenicos  
Mrs Sara-Jane Oakeshott

Further information about the course content and outcomes can be obtained from the website below.  
<https://educationstandards.nsw.edu.au/wps/portal/nesa/11-12/stage-6-learning-areas/stage-6->