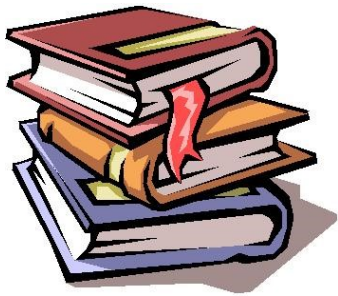




MELVILLE HIGH SCHOOL
ENGLISH FACULTY

English Advanced



In the English Advanced course, students continue to explore opportunities that are offered by challenging texts to investigate complex and evocative ideas, to evaluate, emulate and employ powerful, creative and sophisticated ways to use language to make meaning, and to find enjoyment in literature.

English Advanced is designed for students to undertake the challenge of higher-order thinking to enhance their personal, social, educational and vocational lives.

Careers in English

Occupations where a study of English applies are endless, but could include: -

Law Clerk	Journalist
Public servant	Writer
Educational Aide	Librarian
Anthropologist	Teacher
Media presenter	Public relations
Editor	Lawyer
Sociologist	Archivist



www.melville-h.schools.nsw.edu.au

MELVILLE HIGH SCHOOL

44-50 NICHOLSON STREET, KEMPSEY, NSW 2440
PH (02) 6562 7511

Why study English Advanced?

The study of English in Stage 6 enables students to understand and use language effectively. They appreciate, enjoy and reflect on the English language and make meaning in ways that are imaginative, creative, interpretive, critical and powerful. Students value the English language in its various textual forms to become thoughtful and effective communicators in a diverse global world.

Through their study of English students can become critical thinkers, and articulate and creative communicators. They extend and deepen their ability to use language in subtle, nuanced, inventive and complex ways to express experiences, ideas and emotions. They do this through critical study and through the skilful and creative use of language forms and features, and of structures of texts composed for different purposes in a range of



Year 11 Course Topics

- Common Module
Reading to Write
- Module A
Narratives that shape our world
- Module B
Close Study of Literature



Year 12 Course Topics

- Common Module
Texts and Human Experiences
- Module A
Textual Conversations
- Module B
Critical study of Literature
- Module C
The Craft of Writing (This may be studied in conjunction with either Module A or B)

Text Requirements

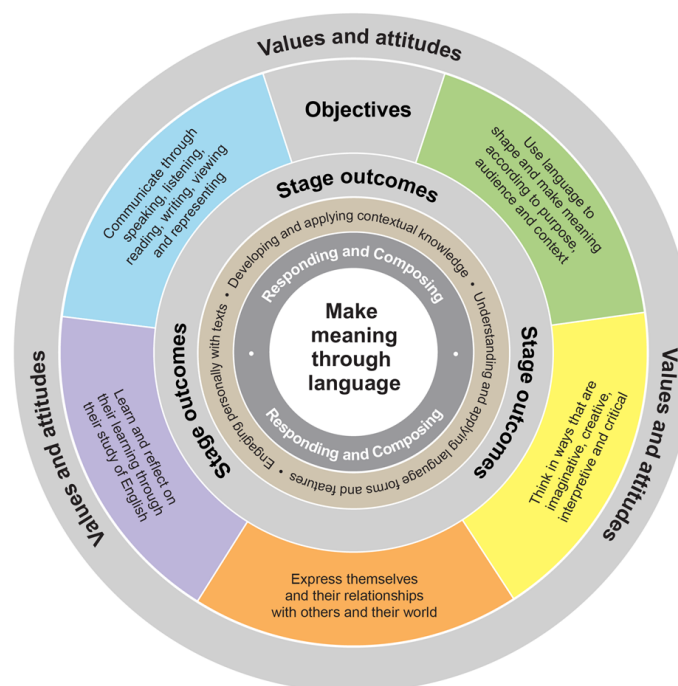
Students are required to closely study **three types of prescribed texts**, one drawn from each of the following categories:

prose fiction

poetry **OR** drama

film **OR** media **OR** nonfiction

The selection of texts for *Module C: The Craft of Writing* does not contribute to the required pattern of prescribed texts for the course.



English Faculty

English is a mandatory course for all students in Year 11/ 12. Students are encouraged to choose an English course based on their ability level.

If you are unsure please discuss your options with either your teacher or the Head teacher English.

Staff

Ms Korrin Chennell (Head Teacher)
Mrs Michelle Brennan (Head Teacher Admin)
Mrs Carli Baker
Mr Nick Domenicos
Mrs Sara-Jane Oakeshott

Further information about the course content and outcomes can be obtained from the website below.
<https://educationstandards.nsw.edu.au/wps/portal/nesa/11-12/stage-6-learning-areas/stage-6->