



Principal: Mr J Hollingsworth B.Ed, Dip. Teach (P.E.)
Deputy Principal: Mr T Stewart B.A. (Hons), Dip. Ed. M.Ed.
Deputy Principal: Mrs V Staunton B.Sc, Dip. Ed.
T 6562 7511 F 6562 7405 E melville-h.School@det.nsw.edu.au

Term 3 – Issue 12

Friday, 21 August 2015

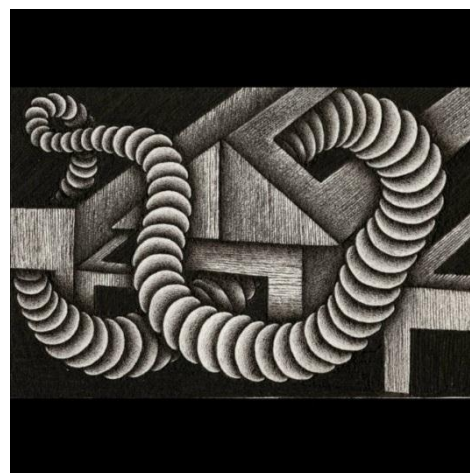
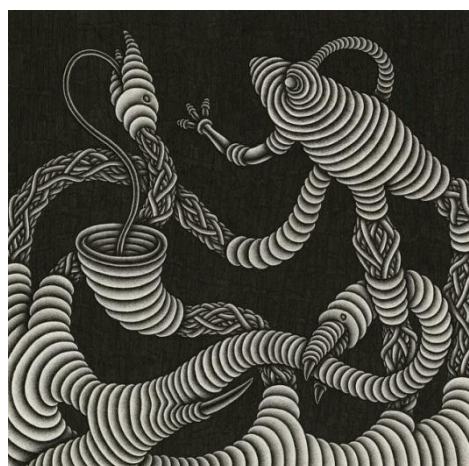
Term 3

Week 7

Mon 24 Aug to 28 Aug	Yr 12 PLP Interviews
Thurs 27 Aug	PISA Testing

FROM THE ART DEPARTMENT

Moshe Uhrig Has Exhibition in Melbourne



Former Melville High School student Moshe Uhrig has recently had a solo exhibition at the Black Cat Café in Fitzroy.

Moshe, whose Year 12 Visual Arts body of work was hung at The NSW Art Gallery as part of the 2013 ARTEXPRESS exhibition, has continued to create his highly detailed, surrealistic artworks. Original artworks and limited edition prints, using fine black marker pen, were the major focus of the exhibition.

Dias De Los Muertos

Year 9 Visual Arts students are working on a project based on the Mexican celebration Dias De Los Muertos (Day of the Dead). They are learning about Mexican culture, studying the way in which the people pay homage to their ancestors, celebrating their achievements in a positive but macabre way.

With emphasis on the skull as a motive for their designs, students are creating masks and sculptural forms. When these are finished they will celebrate with a Mexican style feast and exhibition.





La Calavera Catrina (1910-1913) by Mexican artist, José Guadalupe Posada; an icon of The Day of the Dead. **Skulls by Year 9 students.**

HSC Exams under way at Melville High School

Year 12 Creative Arts students in Drama, Music and Visual Arts are finalising their work in readiness for the external examiners.

- On Monday 24th August, Visual Arts students will hand in their completed bodies of work. They have been working on these all year and the markers will recognise the high levels of effort and skill on display.
- On Tuesday 25th and Wednesday 26th August, Drama students will present their group and individual performances for the examiners.
- On Monday September 7th, Music students will perform for the examiners. Each candidate will present four items that are a reflection of their interests and of the areas of syllabus content they have elected.

In all cases, the students will have “locked away” marks towards the HSC. We wish them every success and hope that their efforts are accurately rewarded.

HSC SHOWCASE – 2015

On Thursday September 3rd, Year 12 Creative Arts students will showcase their work to the wider public. Starting at 7.00 PM in the hall, the evening will entertain the viewer with an outstanding selection of artworks and highly skilled musical and dramatic performances.

The students have made a great effort throughout the year and now just need a large audience to come along and see the degree of skill of which they are capable.

Entry will be by gold coin donation so make sure the date is on your calendar.

DEPUTY PRINCIPAL'S REPORT

As we move past the midway point of Term 3, there are several people who are actively involved in preparing certain groups of students for the roles they will soon be taking in our school. One such group is our 2016 cohort of Year 7 students. Mrs Sue Ring, the 2016 Year 7 Year Advisor and Mrs Robyn Townsend our beloved Community Liaison Officer are very busy coordinating visits to all our partner Primary Schools in order to assist our new students in acclimatising to life at Melville High. Many thanks go to our student reps who are assisting them. They certainly do us proud.

Another group of students whose roles will soon change dramatically are our 2015-16 senior school leaders. The 2014-15 leaders have served the school well in a variety of ways, not the least of which was actively upholding and promoting the Melville High School core values of Responsibility, Industriousness, Growth, Health and Teamwork.

These core values which are summed up in the Melville High School catch phrase “We Do It Right”, are expectations that the school has of all the members of the Melville High School Community – Students, Staff and Parents/Carers.

As mentioned, the roles of many of our students are in a state of change and it is timely to remind all sections of our Community about what these values represent and mean. Our school has long had an explanation for our students of what it means to be part of a part of a Respectful, Industrious, Growing, Healthy Team. However, the staff have lately been working on similar sorts of expectations for the staff and parents/carers. As

our core values relate to all sections of the school community, all sectors should have input. To this end please see attached to this edition of Melville Matters, proformas that can be used to outline what you as parents/carers expect of yourselves and the staff in terms of these values.

Please feel free to put your thoughts down and forward them to myself, Robyn Townsend or any member of the P&C committee. Some examples are included for your information.

Student input will be obtained through our student representative council. Please be active in your support of this initiative.

Year 12 will soon receive their results for the Trial HSC exams. This will provide them with important feedback on their performance and areas on which they may still need to concentrate. It is vital with only weeks to go, that our Year 12 students continue to make the most of every opportunity, the expertise of their teachers and the limited classtime they still have.

Tell Them From Me Survey

Please be encouraged to participate in this vital survey. Only with comprehensive input from all school sectors can a true picture be formed of the necessary improvements in practice so as to inform school planning.

From the Maths Department

Calculators are the best Mathematical tool which can be used through all your years at school. They are not just used in Maths but in many other subjects such as Science and Business Studies. You can purchase one from the school for \$17.85.

Maths is used in many different jobs. Below is just a sample and each job mentioned uses maths in many different ways. From simple addition to complex equations, there is a use for maths; you just don't know it yet.

MATH APPRENTICE

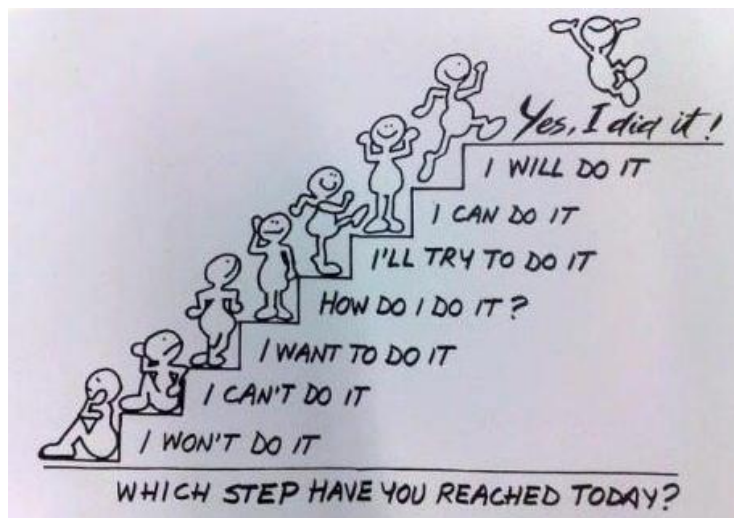
Math is the path to anything you want to be.

BICYCLE DESIGNER	BIOLOGIST
ARTIST	MECHANIC
INVENTOR	ARCHITECT
	PROGRAMME

CHEF	SPORTSCASTER	ASTRONOMER
DOCTOR	VETERINARIAN	
GAME DESIGNER	METEOROLOGIST	

SUCCESS!

To achieve at school and life, it is all in your attitude. "I won't" will get you nowhere and keep you at the bottom of the stairs. As soon as you start to try and think "I can", you will start to see results. It is all about being positive and giving it a go. Every step forward makes a difference.



Question Time

If you are wondering what type of questions you might have to complete in General Mathematics. Here you go:

A rain gauge registered 60mm of rain during a storm. The rain fell on a shed with a rectangular roof that measures 25 metres by 10 metres.

- How many litres of water fell on the shed?
Answer to the nearest litre.

The water that fell on the shed was collected in an empty cylindrical tank with a diameter of 6 metres. What depth of water will be in the tank? Answer correct to two decimal places





Check out School A to Z - practical help for parents on homework, child wellbeing and technology use.

Does your child need help with assignments or homework? This is a place to start. It is the DEC's School A-Z website. You can find it by searching School A to Z or going to the following address.

<http://www.schoolatoz.new.edu.au/homework-and-study/other-subjects-and-assignments>



Do you know a female student in Years 9 or 10 with an aptitude and interest in Maths and Science, who might also be interested in a career in Engineering?

In January 2016, the University of Wollongong will be hosting the Women in Engineering Summit, a week-long camp filled with hands-on activities in Science, Technology, Engineering and Maths (STEM). The program has been developed around theme days related to Medicine and the Human Body; Renewable Energy and the Natural Environment; Sustainability and the Built Environment; Creativity and Design. This STEM camp for girls is a great way for students to be exposed to activities such as coding, testing water quality, soldering, animatronics, star gazing, 3D printing, industry site visits and much more! The camp seeks to build confidence, resilience and success within girls so that they may grow to take on some of the world's greatest

challenges. We will create an environment of learning where risk is rewarded, curiosity is encouraged, and creativity is expected. This is an excellent opportunity for girls to see what they can achieve and establish strong supportive networks.

WHERE AND WHEN

The Women in Engineering Summit will run from Sunday 10 January to Friday 15 January 2016. Summit participants will stay (in small groups) at a UOW student residence with a live-in student leader, a young woman who is a UOW Engineering student or a recent graduate working in the industry.

COST

The Summit fee of \$198 covers all meals, accommodation and activities during the Summit. Bookings made before 30 September will be eligible for the early bird fee of \$165.

HOW TO APPLY

To register and pay online, please visit eis.uow.edu.au/wie-summit

Registrations are open until 31 October 2015, but places are limited so students should get in quick! If you have any questions please contact Mr Eichler at school.

WEP Australia

Interested in becoming a WEP Australia exchange student? Read on to find out how.

WEP Student Exchange

A WEP student exchange allows teenagers to exchange their school, culture, family and possibly language for a selected time period in another country. It is far more rewarding than simply being a tourist, as students live like locals and acquire knowledge not available to the general traveller. It is a once-in-a-lifetime opportunity to travel and study at an overseas school with the support of a volunteer host family.

Hear from one of our returned students:

"Honestly, choosing to go on exchange is one of the best decisions I have ever made. You experience so many different aspects living in a different culture for a couple of months that you would never experience any other way. I have made so many memories with my host family, friends and improved my French so much that I wouldn't change this experience for anything. I will truly miss everyone I have met!"

-Sophie, France

Find out more on WEP's social media pages!

If overseas travel isn't right for you, why not host?

WEP Student Hosting

We are now looking for volunteer host families for our exchange students arriving in February. Open your hearts and home to an overseas student and benefit from the following:

- Gain longlasting friendships
- Experience another culture
- Rediscover your backyard
- Most importantly, have loads of fun!

"Our hosting experience exceeded expectations. Seb was an absolute delight to have in our home for three short months."

-Kaye, Melbourne

REQUEST A FREE INFORMATION PACK

www.wep.org.au 1300 884 733

info@wep.org.au



Speak,
scream, howl,
whisper, even
sing ...

... at the Australian Poetry Slam, being held at Kempsey Library in Elbow Street West Kempsey, on **Friday 18 September**. Sign on (for performers) is at 4.30pm, and performances begin at 5pm. Come along as a performer, an audience member or both!

The Slam is performance poetry at its toe tapping, finger snapping best, and is open to all ages and levels of experience. Anyone can participate - all you need is your voice. Writers and performers are given a microphone, a live audience and just two minutes to impress the judges with their original spoken word, poetry, hip hop, monologues and stories.

Performers please note the following important information:

- There is a limit of 20 performers, you must sign on at 4.30pm sharp
- You should prepare two original works in case of a tie break
- There can only be one winner, and that lucky person will get the chance to go to Sydney for the finals, with return travel and one night's accommodation provided by Kempsey Library
- Be sure to read the Rules, and the terms and conditions of entry available at the Australian Poetry Slam website, at www.australianpoetryslam.com

For enquires about the Australian Poetry Slam heat at Kempsey Library, please send an email to Kempsey.library@kempsey.nsw.gov.au or phone 6566 3210.



MELVILLE HIGH SCHOOL PBL MATRIX FOR STAFF

At Melville High School, we Do It R.I.G.H.T.!!

Respectful	<ul style="list-style-type: none"> • Language and actions reflect Melville High's PBL values.
Industrious	<ul style="list-style-type: none"> • Lead by example, be on time and prepared.
Growing	<ul style="list-style-type: none"> •
Healthy	<ul style="list-style-type: none"> •
Team	<ul style="list-style-type: none"> • Keep Parents/Carers informed.

	<ul style="list-style-type: none"> • Contact the school first when there is a concern related to
--	---

MELVILLE HIGH SCHOOL

PBL MATRIX FOR PARENTS

At Melville High School, we Do It R.I.G.H.T.!!

Respectful	<ul style="list-style-type: none"> • Contact the school first when there is a concern related to your child.
Industrious	<ul style="list-style-type: none"> •
Growing	<ul style="list-style-type: none"> •
Healthy	<ul style="list-style-type: none"> • Keep medical information and student contacts current.
Team	<ul style="list-style-type: none"> • Contribute positively to the school.